



NORIS Medical
ENGINEERED FOR HEALTH

Noris Medical

Company Presentation

Dental Department

2013



Engineered for Health

**Tell us your challenge,
We will provide you with**



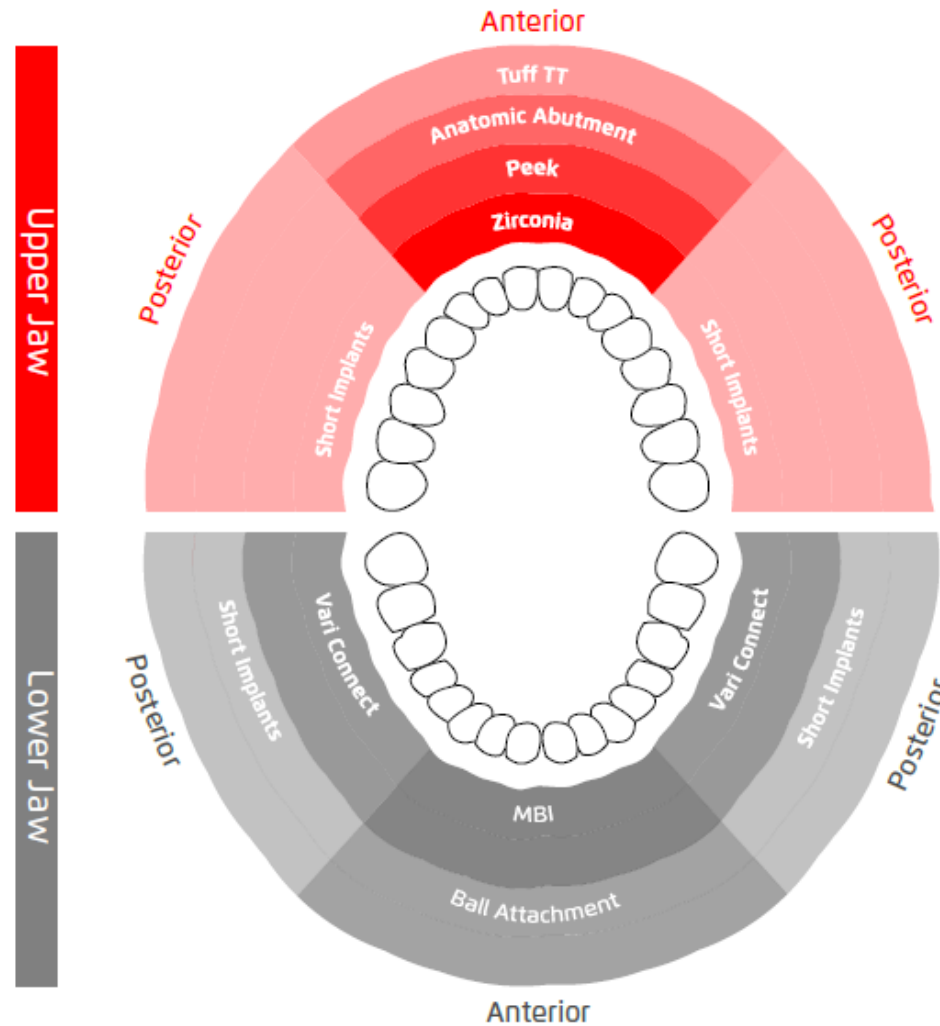
The answer

Engineered for Health

- ❑ **Founded & Directed by experienced oral surgeons and engineers.**
- ❑ **Delivering New mindset in the world of Medical solutions.**
- ❑ **Our vision is to improve the lives of the entire dental community around the world with our state of the art design & technology.**



Tending to Your Needs!



Precision Down to the Smallest Detail!



Implant systems



Prosthetics



Stopper drills kit



Packaging

NORIS Medical
ENGINEERED FOR HEALTH



Premium surgical kit



Dental Implants The Beauty of Perfection

Tuff



Tuff TT



Onyx



Cortical



MBI



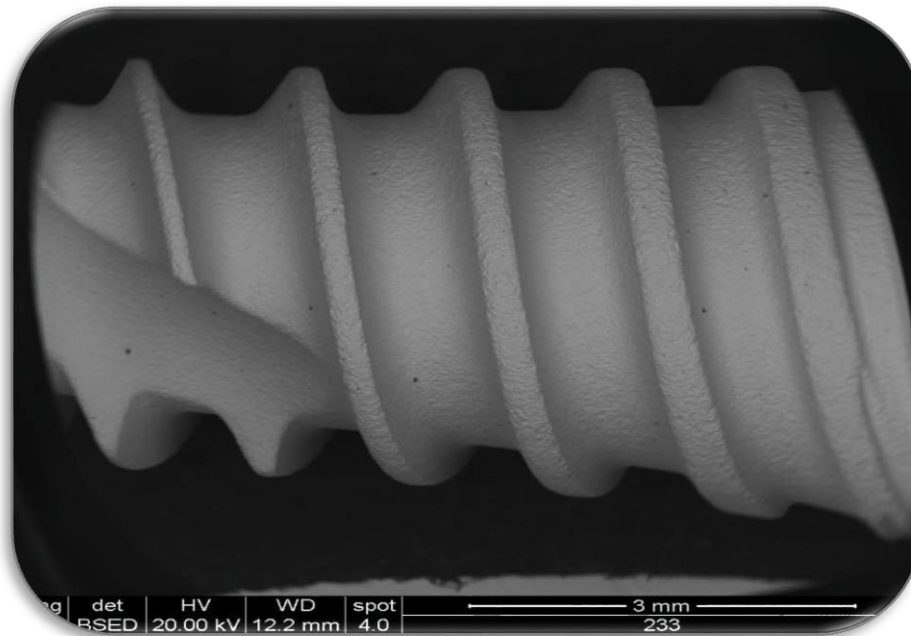
Mono



- ❑ Accuracy above all.
- ❑ Variety of Innovative Solutions.
- ❑ Quality & Simplicity is our motto.

Implants Materials

Noris Medical uses TiAl6V4 ELI* to produce all its dental implants and prosthetic components. Titanium alloys are recognized for their excellent tensile strength and superior biocompatibility.



*Grade 5

Surface Treatment

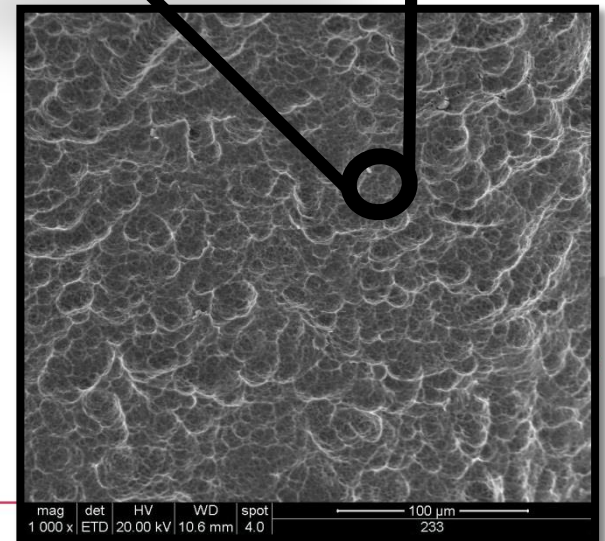
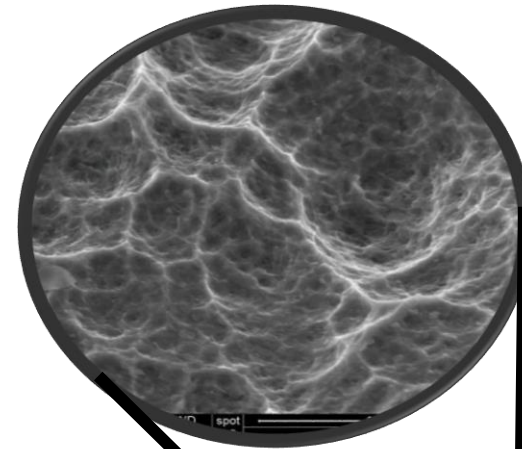
SLA

Sand blasted, Large grit, Acid etched.

Macroscopic and microscopic properties of implant surfaces play a major role in the osseous healing of dental implants. Roughened implant surfaces give increased retention strength. The topography down to the nanometer affects the attachment and growth of bone cells.

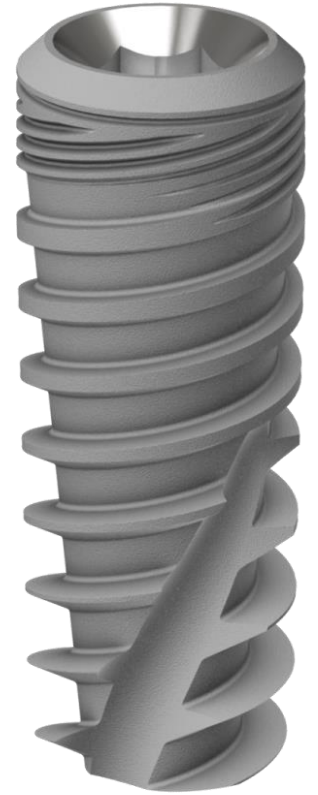
Noris Medical employs the SLA (Sandblasted, Large grit, Acid etched) technique in order to induce the sub-micro topography.

SEM
Analysis



Tuff Implant

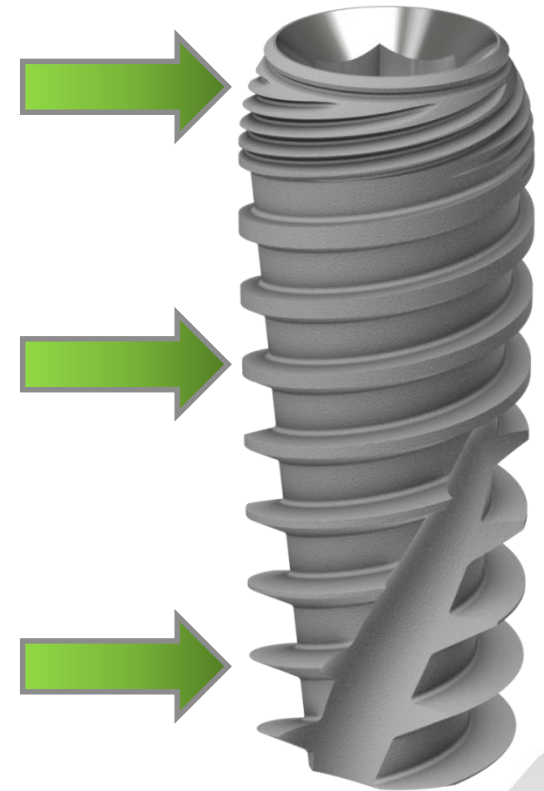
- ❑ Suitable for all bone types.
- ❑ 2.42 mm hexagon.
- ❑ Unified prosthetic platform for all implants.
- ❑ Excellent retention for Immediate Loading.
- ❑ Tapered body for better bone preservation.
- ❑ Sharp threads for reduced trauma to the bone.
- ❑ Two starts for main thread.
- ❑ Self tapping.
- ❑ Capable of changing direction during insertion.



Tuff TT Implant

The taper top converging coronal shape allows platform switch technology to prevent crestal bone loss.

- ❑ The micro thread at the upper zone adds stability and prevents crestal bone loss.
- ❑ The middle zone square type thread is used for compressing cancellous bone and helps achievement of maximum BIC.
- ❑ The lower V-shape thread zone enables self-tapping



EXPLORING OUR UNIQUE & REVOLUTIONARY IMMEDIATE PLACEMENT IMPLANT



Cortical Implant

- ❑ Developed after many years of combined experience especially for immediate placement.
- ❑ The threads are orthogonal to the occlusion load.
- ❑ Greater resistance to the lateral mechanical stress.
- ❑ Remarkable stability capacity.
- ❑ Permanent stabilization being achieved from the compact bone.
- ❑ The stabilization protects osteogenesis by the "**tranquil state**" in which recovery occurs.



MBI Implant

- ❑ One-piece implant with integrated ball attachment to stabilize a tissue-supported denture.
- ❑ self-tapping implant.
- ❑ Designed for placement in a very narrow ridge.
- ❑ MBI features a unique thread for immediate insertion.
- ❑ The implant can be placed in all types of bone.
- ❑ Can be subjected to immediate load.



Mono Implant

- ❑ One-piece implant for cemented restorations.
- ❑ Designed for placement in a very narrow ridge, or in ridges with small mesiodistal space.
- ❑ The implants are cleared for immediate loading.
- ❑ Prevent cervical resorption.



A Range of Dental Prosthetic Products Engineered for a Lifetime

- ❑ PEEK Temporary Abutments
- ❑ Straight Abutments
- ❑ Angulated Abutments
- ❑ Esthetic Abutments
- ❑ Zirconia Abutments
- ❑ Castable Abutments



Anatomic Abutments

Straight and angulated Abutments

A wide variety of titanium Anatomic straight and angulated abutments are available for use in different situations.

Used in the fabrication of cement-retained restorations, single crowns or bridges.



Multi-Unit System Entire Product Line for Immediate Loading

- ❑ Straight Multi-Unit
- ❑ Angulated Abutments
17° 30° 45° optional

❖ Similar to leading dental company



Vari-Connect Unique product line for Removable Prosthesis

Ball connect

Flat connect

17° 30° 45° optional



Global Activity



 **NORIS** Medical

About the Company

□ Engineering and R&D

- Studying the needs of the dental practice.
- Development of innovative products.
- State-of-the-art machinery and CAD/CAM technologies
- Design and optimize the manufacturing processes



□ Quality

- Strict quality assurance processes with great care in selecting materials, production methods, sterilization and packaging .
- Continuously maintains and monitors its top quality products and extreme quality procedures.



About the Company

□ Standards

- Products carry the CE mark and meet the European Medical Device Directive (93/42/EEC).
- Meticulous quality control system is in compliance with ISO 9001:2008 and ISO 13485:2003.
- Facilities are subject to routine audits by international auditors.
- Class 10,000 Clean Room for packaging.



Launching programs 2013

- ❑ Drills-Q2
- ❑ Surgical kits-Q2
- ❑ Zygomatic implant- Q3
- ❑ Conical connection-Q4
- ❑ RBM surface-Q4



Suggestions? Ideas? Needs?



Optimizing solutions!



NORIS Medical
ENGINEERED FOR HEALTH

Thank You

Click to challenge us...

www.norismedical.com

info@norismedical.com